

CosmoCalc Installation Instructions

June 16, 2007

1 Installing CosmoCalc

Download `CosmoCalc.xlsa` to the Windows system folders:

- Excel XP(2003) on Windows XP:

`C:\Documents and Settings\UserName\Application Data\Microsoft\AddIns`

- Excel 2000 on Windows 98:

`C:\Windows\Application Data\Microsoft\AddIns`

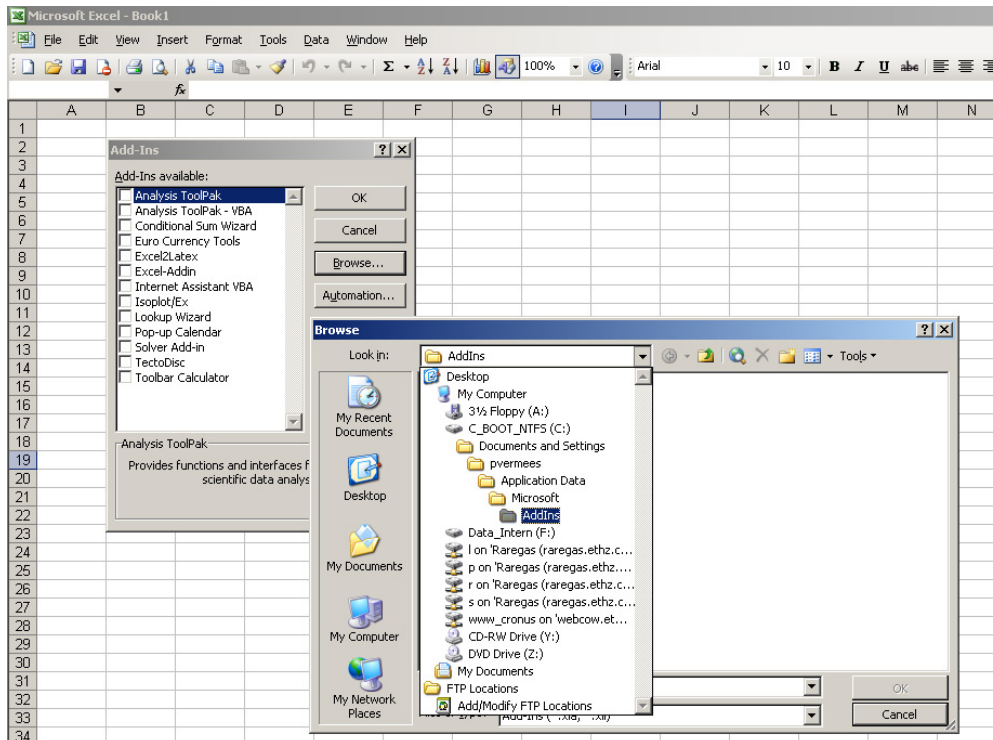


Figure 1: If you can't find the systems folder, select `Tools → Add-Ins → Browse...` This takes you to the Add-Ins directory, the path of which can be seen from the pull-down menu.

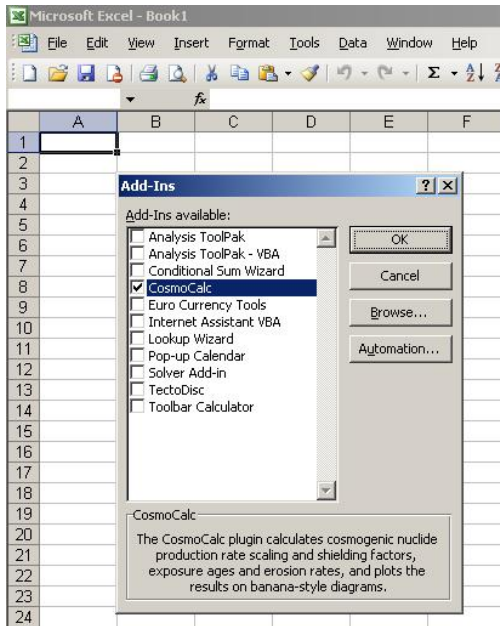


Figure 2: Downloading `CosmoCalc.xla` to the Add-Ins folder makes CosmoCalc available to all directories. Start Excel and select Tools → Add-Ins. An Add-In is enabled when its checkbox is marked. The Add-In is disabled by unmarking the CosmoCalc checkbox

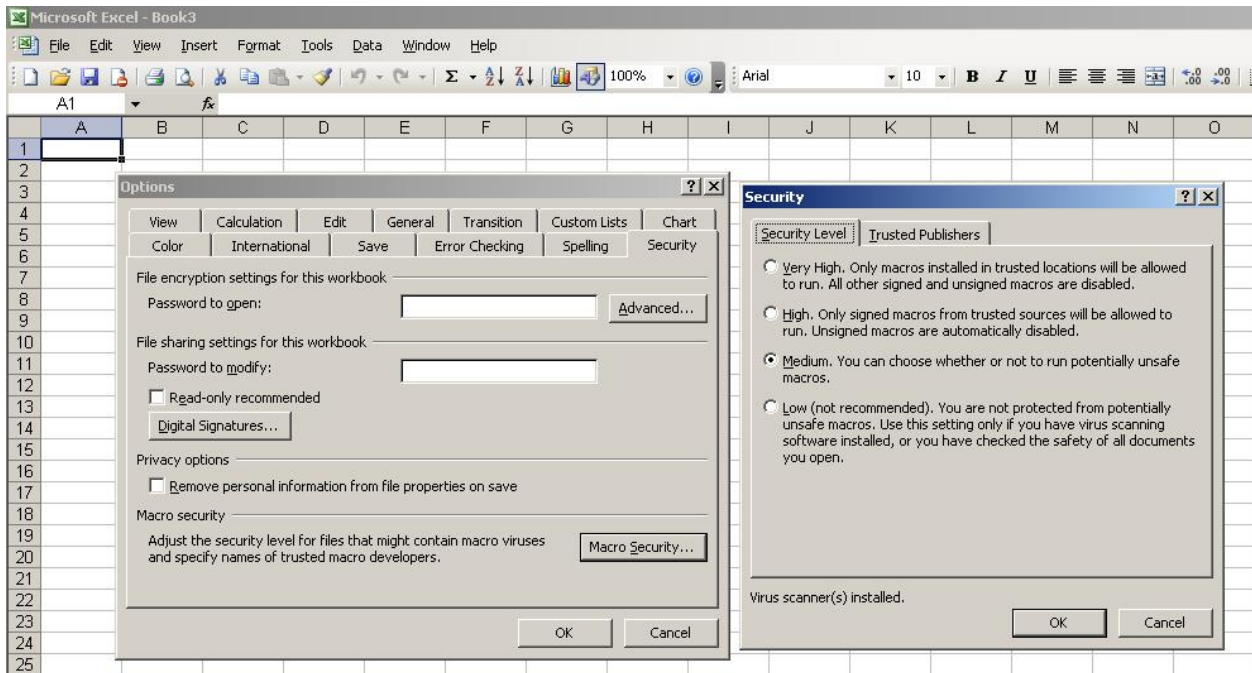


Figure 3: If the previous commands don't work, please check if your Excel Macro Security settings are not set too high. Click Tools → Options → Security → Macro Security → Medium.

2 Uninstalling/upgrading CosmoCalc

Unmark the CosmoCalc checkbox in the Add-Ins window (Fig 2) and (re)move the “CosmoCalc.xla”-file from the Windows system files:

- Excel XP(2003) on Windows XP:

C:\Documents and Settings\UserName\Application Data\Microsoft\AddIns

- Excel 2000 on Windows 98:

C:\Windows\Application Data\Microsoft\AddIns

The next time you start Excel, CosmoCalc will be gone.